



# Timbila Nature Reserve by N/a'an ku sê

## RACK RATES 2024

RATES ARE PER PERSON PER NIGHT.

SAFARI LODGE, PRIVATE VILLA CAMP NAMIBIA AND CAMPSITES, & FARMSTEAD

### LOW SEASON

RATES VALID FROM 1 JAN – 31 MAR & 1-31 DEC 2024

#### TIMBILA SAFARI LODGE

##### LUXURY TENTED SUITES x9

FI Single	N\$12 260.00
FI Sharing	N\$ 8 755.00
FI Child	N\$ 4 377.50
DBB Single	N\$10 025.00
DBB Sharing	N\$ 7 160.00
DBB Child	N\$ 3 580.00
DBB Guide	N\$ 3 580.00
Conservation Levy	N\$ 300.00

##### LUXURY FAMILY TENTED CLUSTER

FI Single	N\$18 385.00
FI Sharing	N\$13 135.00
FI Child	N\$ 6 570.00
Conservation Levy	N\$ 300.00

##### PRIVATE LUXURY VILLA

FI Basis, max 10 guests	N\$ 123 600.00
Conservation Levy PP	N\$ 300.00

##### CAMP NAMIBIA: LUXURY GLAMPING TENTS x12

Self Catering Single	N\$ 1 470.00
Self Catering Sharing	N\$ 1 050.00
Self Catering Child Sharing	N\$ 525.00
Self-Catering Guide	N\$ 700.00
Conservation Levy	N\$ 100.00

##### CAMP NAMIBIA CAMPSITE: LUXURY CAMPSITES x4

Self Catering Single	N\$ 372.00
Self Catering Child Sharing	N\$ 186.00
Conservation Levy	N\$ 100.00

##### FARMSTEAD: LUXURY FARMHOUSE – 6 ROOMS

Self Catering Single	N\$ 2 255.00
Self Catering Sharing	N\$ 2 050.00
Self Catering Child Sharing	N\$ 1 025.00
Conservation Levy	N\$ 100.00

### HIGH SEASON

RATES VALID FROM 1 APR – 30 NOV 2024

#### TIMBILA SAFARI LODGE

##### LUXURY TENTED SUITES x9

FI Single	N\$20 910.00
FI Sharing	N\$14 935.00
FI Child	N\$ 7 467.50
DBB Single	N\$18 675.00
DBB Sharing	N\$13 340.00
DBB Child	N\$ 6 670.00
DBB Guide	N\$ 6 670.00
Conservation Levy	N\$ 300.00

##### LUXURY FAMILY TENTED CLUSTER

FI Single	N\$31 365.00
FI Sharing	N\$22 405.00
FI Child	N\$11 202.50
Conservation Levy	N\$ 300.00

##### PRIVATE VILLA

FI Basis, max 10 guests	N\$185 400.00
Conservation Levy PP	N\$ 300.00

##### CAMP NAMIBIA: LUXURY GLAMPING TENTS x12

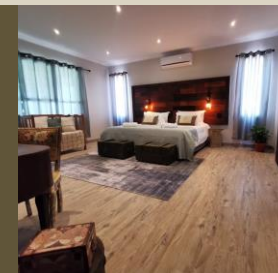
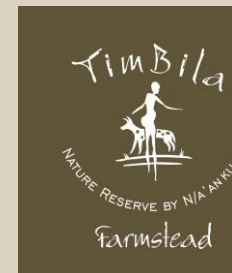
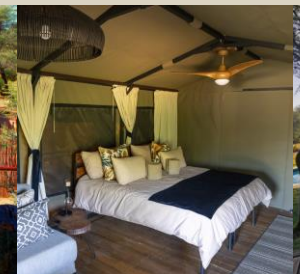
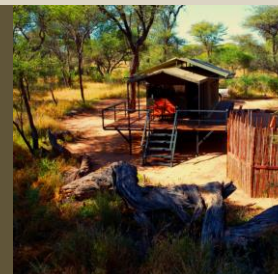
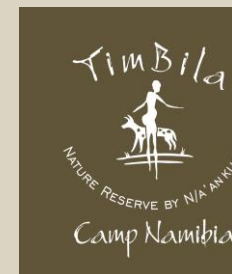
Self Catering Single	N\$ 1 992.00
Self Catering Sharing	N\$ 1 425.00
Self Catering Child Sharing	N\$ 712.50
Self-Catering Guide	N\$ 840.00
Conservation Levy	N\$ 100.00

##### CAMP NAMIBIA CAMPSITE: LUXURY CAMPSITES x4

Self Catering Single	N\$ 375.00
Self Catering Child Sharing	N\$ 187.50
Conservation Levy	N\$ 100.00

##### FARMSTEAD: LUXURY FARMHOUSE – 6 ROOMS

Self Catering Single	N\$ 2 975.00
Self Catering Sharing	N\$ 2 700.00
Self Catering Child Sharing	N\$ 1 350.00
Conservation Levy	N\$ 100.00





# Timbila Nature Reserve by N/a'an ku sê

## RACK RATES 2024

RATES ARE PER PERSON PER NIGHT.

SAFARI LODGE, PRIVATE VILLA CAMP NAMIBIA AND CAMPSITES, & FARMSTEAD

### ACTIVITIES OFFERED @ SAFARI LODGE & PRIVATE VILLA

Behind the Scenes @ 08h00	N\$ 2085.00 (5 hours)
Sunrise Conservation Drive @ 06h00	N\$ 850.00 (5 hours)
Sunset Conservation Drive @ 17h00	N\$ 850.00 (5 hours)
Nature Bush Walk @ 10h00	N\$ 720.00 (2.5 hours)
Carnivore Tracking @ 10h00	N\$ 1250.00 (2.5 hours)
Rhino Tracking @ 10h00	N\$ 1250.00 (2.5 hours)
Elephant Tracking @ 10h00	N\$ 1250.00 (2.5 hours)

### **CHILDREN:**

Children 0-3 years stay FOC (Children aging maximum of 2 years, 11 months, and 30 days)

Children 3-12 years pay 50% of the sharing adult rate, when sharing with an adult (Children aging maximum of 11 years, 11 months, and 30 days)

A maximum of one child are allowed to stay with parents in a room

**LONG STAY SPECIAL:** Receive 20% discount when staying 5 days or more. Cannot be combined with other offers.

**HONEYMOON SPECIAL:** Partner stays for 50% off. Offer is valid all year round with an unlimited number of nights.

Proof of marriage within 12 months of travel must be provided at time of booking.



**DBB (Dinner, Bed & Breakfast)** Incl. Accommodation, breakfast, dinner & VAT. Excl. Lunch, beverages, guest laundry, daily activities, expert guiding, gratuities, conservation levy and items of a personal nature.  
Lunch: N\$ 385.00 (adults) N\$ 192.50,00 (children aged 3-12)

**SADC (The Southern African Development Community)** Angola, Botswana, Democratic Republic of Congo, Lesotho, Madagascar, Malawi, Mauritius, Mozambique, Namibia, Seychelles, South Africa, Swaziland, Tanzania, Zambia and Zimbabwe.

**FULLY INCLUSIVE (FI) -Dinner (Drinks incl.), Bed, Breakfast, Lunch (Drinks incl.) plus, 2x Activities.**

•**Rate Includes:** Accommodation, three meals daily, soft drinks, house wines, local brand spirits and beers, teas and coffees, refreshments on scenic nature drives, laundry, emergency medical evacuation insurance, VAT, transfers to and from the lodge airstrip.

•**Rate Excludes:** Administration fee, telephone calls, Safari Shop purchases, gratuities, all items of a personal nature, champagne, cognacs, fine wines, premium brand spirits and cigars.





# TimBila Nature Reserve by N/a'an ku sê

## RACK RATES 2024

RATES ARE PER PERSON PER NIGHT.

SAFARI LODGE, PRIVATE VILLA CAMP NAMIBIA AND CAMPSITES, & FARMSTEAD

### ACTIVITIES AT THE FARMSTEAD:

#### Included in the Accommodation Rate:

- Bird Watching
- Hiking trail
- Mountain bike trails
- Livestock Experience: Sheep, and goat care
- Bird Nesting Experience
- Agriculturist Experience
- Food Preservation Experience – subject to food availability – additional costs
- Earthworm Experience
- Poultry Farming Experience: Caring for and feeding chickens and turkeys.
- Kids playground
- Swimming pool
- Entertainment Area: Outdoor games. (pool table, dartboard, table tennis)

### ACTIVITIES AT THE FARMSTEAD:

#### Excluded from the Accommodation Rate:

Prices to be advised and may change, please contact Farmstead directly:

- **Bakery Experience:** Baking bread, pies, cakes, and other produce
- **Namibian Braai Experience:** Picnic/Barbeque in the river. (On request only)
- **TimBila Nature Reserve Activities:** Activities of TimBila, outside the farmstead, are also offered, with the applicable rates. (Wildlife viewing, bush walks, Animal tracking hikes, visiting camp Namibia)
- **Mushroom Hunting Experience:** Seasonal activity – additional costs





FI INCLUDES: Accommodation, all meals and local beverages, guest laundry, daily activities and expert guiding & VAT.  
FI EXCLUDES: Premium drinks, gratuities, conservation levy and items of a personal nature.

#### PRIVATE VEHICLES:

- All our open air safari vehicles can accommodate 7 guests.
- Parties of 6 will automatically receive a private vehicle at no extra charge.
- Private vehicles must be booked for the duration of the stay and are charged per night.
- Private vehicles must be booked for families with children younger than 12 years.
- Private vehicles are charged at NAD 7000 per night.

#### TRANSFER SERVICE

- Conservation, activity, and transfer fees are non-commissionable.
- Rates may change without prior notice.
- Rates sheet should be read in conjunction with the camp fact sheet as well as the terms and conditions of booking.
- Luxury family tented cluster includes 3 double/twin tents and a communal living space. A private chef and host are included in the rate.
- Single supplement -additional 40% of applicable rate category

#### TOUR LEADERS

- Bona fide tour leaders are charged 50% of the adult sharing rate in guest accommodation.
- Pilots and local driver guides: Rate only includes accommodation, meals, teas & coffees. Accommodation in a pilot/guide room is on a win basis; single rooms will be allocated depending on availability.

#### PLEASE NOTE:

Rates quoted include Tourism Levies and VAT as well as healthy African style cuisine as per booking confirmation. All meals and activities that forms part of our Full Board / Fully Inclusive Rates are Non-refundable if you don't make use of it/participate in it. Should children be sharing with adults in the Accommodation it will be charged Double Room Rate but for the Villas Single Supplements will apply.

#### PAYMENT AND CANCELATION POLICY

- 4 weeks before arrival 25% payment
- 3 weeks before arrival 50% payment
- 2 weeks before arrival 75% payment
- 0 – 13 days before arrival 100% payment
- No Show will result in 100% payment



#### IMPORTANT INFORMATION:

All guests would be requested to sign an indemnity upon arrival. **It will read as follows:**

I, the undersigned, herewith indemnify TimBila Nature Reserve by N/a'an ku sê, its staff, agents, guests and all other persons associated with TimBila Nature Reserve against any claims which may arise from injury, death or damage to my person or property during my stay at TimBila Nature Reserve. Any photographic or film images I take during my time here are for my own personal use and will not be used professionally or sold, unless TimBila has provided prior written consent. I will adhere to the TimBila Animal Copyright policy. In addition, I hereby give my consent for the administration of emergency medical treatment that may be deemed necessary by TimBila staff.



#### RESERVATIONS

**Tel:** +264 81 677 9192 | **Email:** [timbila@naankuse.com](mailto:timbila@naankuse.com) | **Website:** [www.timbila.com.na](http://www.timbila.com.na)  
TimBila Nature Reserve by N/a'an ku sê, P.O. Box 99292, Windhoek, Namibia.